

AVAILABLE

FOR LEASE

CONTACT:

Jeffrey Wilmore
Dave Peterson

Ph. 707-528-1400

Keegan & Coppin Co., Inc.



www.keegancoppin.com

WESTWIND BUSINESS PARK

3725 Westwind Blvd.

HOME

FEATURES

FLOOR PLAN

DESCRIPTION

AMENITIES

CONTACT



CLASS "A" OFFICE

ONCOR INTERNATIONAL

OFFICES IN 220 CITIES: UNITED STATES, CANADA, DENMARK, FRANCE, GERMANY, INDIA, AUSTRIA, RUSSIA, CHINA, AUSTRALIA, UNITED KINGDOM, THE NETHERLANDS, MEXICO, JAPAN, ITALY, SPAIN, SWITZERLAND, CZECH REPUBLIC, BELGIUM, POLAND, NORWAY, UKRAINE, SWEDEN, FINLAND, HUNGARY, BRAZIL, CHILE, ARGENTINA, IRELAND

The above information, while not guaranteed, has been secured from sources we believe to be reliable. Submitted subject to error, change or withdrawal. An interested party should verify the status of the property and the information herein.

AVAILABLE

FOR LEASE

CONTACT:

Jeffrey Wilmore
Dave Peterson

Ph. 707-528-1400

Keegan & Coppin Co., Inc.



www.keegancoppin.com

WESTWIND BUSINESS PARK

3725 Westwind Blvd.

HOME

FEATURES

FLOOR PLAN

DESCRIPTION

AMENITIES

CONTACT

- Class A Office Space
- 2,500 sf to 34,391 sf approx.
- Warm Shell condition
- Turn-key office improvements
- High quality 2-story office building
- 4.13/1,000 sf parking ratio
- 1/2 court basketball & sand volleyball courts
- Restrooms with showers
- Rent: \$2.05 psf Full Service



ONCOR INTERNATIONAL

OFFICES IN 220 CITIES: UNITED STATES, CANADA, DENMARK, FRANCE, GERMANY, INDIA, AUSTRIA, RUSSIA, CHINA, AUSTRALIA, UNITED KINGDOM, THE NETHERLANDS, MEXICO, JAPAN, ITALY, SPAIN, SWITZERLAND, CZECH REPUBLIC, BELGIUM, POLAND, NORWAY, UKRAINE, SWEDEN, FINLAND, HUNGARY, BRAZIL, CHILE, ARGENTINA, IRELAND

The above information, while not guaranteed, has been secured from sources we believe to be reliable. Submitted subject to error, change or withdrawal. An interested party should verify the status of the property and the information herein.

AVAILABLE

FOR LEASE

CONTACT:

Jeffrey Wilmore
Dave Peterson

Ph. 707-528-1400

Keegan & Coppin Co., Inc.



www.keegancoppin.com

WESTWIND BUSINESS PARK

3725 Westwind Blvd.

HOME

FEATURES

FLOOR PLAN

DESCRIPTION

AMENITIES

CONTACT

- One block from Sonoma County Airport with air service provided to Los Angeles and Seattle effective March 2007
- Excellent on-site parking
- Well maintained exterior landscape
- On-site property management
- Within ½ mile of several restaurants, Airport Health Club and Windsor Golf
- ISDN & T1 capable



ONCOR INTERNATIONAL

OFFICES IN 220 CITIES: UNITED STATES, CANADA, DENMARK, FRANCE, GERMANY, INDIA, AUSTRIA, RUSSIA, CHINA, AUSTRALIA, UNITED KINGDOM, THE NETHERLANDS, MEXICO, JAPAN, ITALY, SPAIN, SWITZERLAND, CZECH REPUBLIC, BELGIUM, POLAND, NORWAY, UKRAINE, SWEDEN, FINLAND, HUNGARY, BRAZIL, CHILE, ARGENTINA, IRELAND

The above information, while not guaranteed, has been secured from sources we believe to be reliable. Submitted subject to error, change or withdrawal. An interested party should verify the status of the property and the information herein.

AVAILABLE

FOR LEASE

CONTACT:

Jeffrey Wilmore
Dave Peterson

Ph. 707-528-1400

Keegan & Coppin Co., Inc.



www.keegancoppin.com

WESTWIND BUSINESS PARK

3725 Westwind Blvd.

HOME

FEATURES

FLOOR PLAN

DESCRIPTION

AMENITIES

CONTACT



- One block from Sonoma County Airport with Commercial Air Service.
- Within 1/2 mile to a choice of Amenities including:
 - Restaurants -
 - Hilton Hotel -
 - Airport Health Club -
 - Windsor Golf Course -
 - Chevron Gas Station -
 - Convenient Market -
 - Movie Theater -



- Easy Access to Hwy 101 via Airport Blvd.
- On-Site Property Management.



ONCOR INTERNATIONAL

OFFICES IN 220 CITIES: UNITED STATES, CANADA, DENMARK, FRANCE, GERMANY, INDIA, AUSTRIA, RUSSIA, CHINA, AUSTRALIA, UNITED KINGDOM, THE NETHERLANDS, MEXICO, JAPAN, ITALY, SPAIN, SWITZERLAND, CZECH REPUBLIC, BELGIUM, POLAND, NORWAY, UKRAINE, SWEDEN, FINLAND, HUNGARY, BRAZIL, CHILE, ARGENTINA, IRELAND

The above information, while not guaranteed, has been secured from sources we believe to be reliable. Submitted subject to error, change or withdrawal. An interested party should verify the status of the property and the information herein.

AVAILABLE

FOR LEASE

CONTACT:

Jeffrey Wilmore
Dave Peterson

Ph. 707-528-1400

Keegan & Coppin Co., Inc.



www.keegancoppin.com

WESTWIND BUSINESS PARK

3725 Westwind Blvd.

HOME

FEATURES

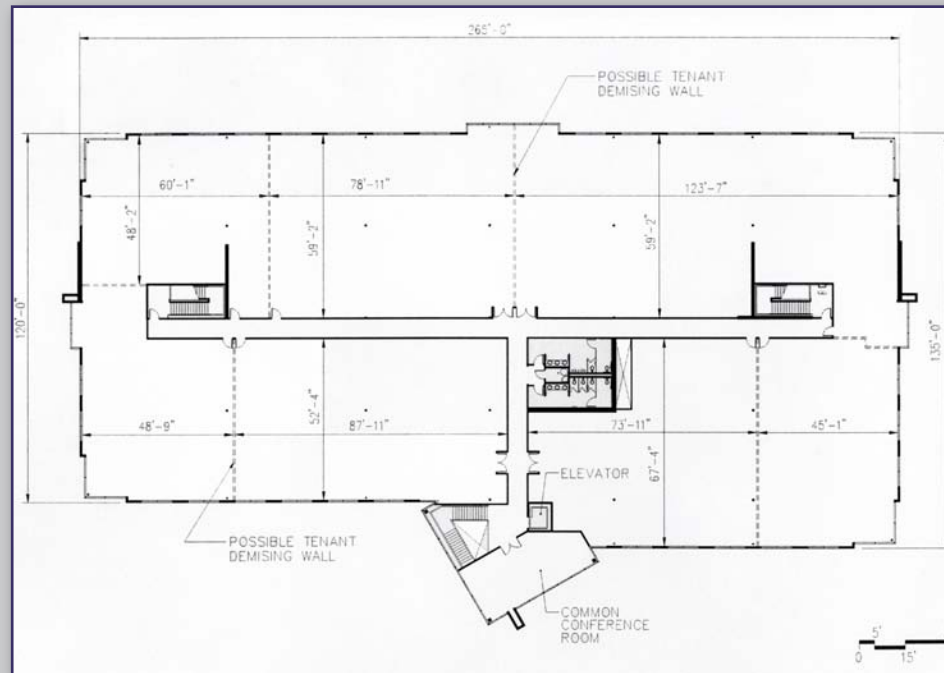
FLOOR PLAN

DESCRIPTION

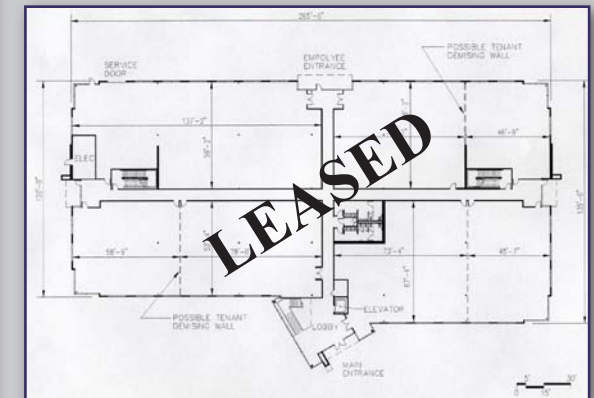
AMENITIES

CONTACT

Second Floor



First Floor



ONCOR INTERNATIONAL

OFFICES IN 220 CITIES: UNITED STATES, CANADA, DENMARK, FRANCE, GERMANY, INDIA, AUSTRIA, RUSSIA, CHINA, AUSTRALIA, UNITED KINGDOM, THE NETHERLANDS, MEXICO, JAPAN, ITALY, SPAIN, SWITZERLAND, CZECH REPUBLIC, BELGIUM, POLAND, NORWAY, UKRAINE, SWEDEN, FINLAND, HUNGARY, BRAZIL, CHILE, ARGENTINA, IRELAND

The above information, while not guaranteed, has been secured from sources we believe to be reliable. Submitted subject to error, change or withdrawal. An interested party should verify the status of the property and the information herein.

AVAILABLE

FOR LEASE

CONTACT:

Jeffrey Wilmore
Dave Peterson

Ph. 707-528-1400

Keegan & Coppin Co., Inc.



www.keegancoppin.com

WESTWIND BUSINESS PARK

3725 Westwind Blvd.

HOME

FEATURES

FLOOR PLAN

DESCRIPTION

AMENITIES

CONTACT



Jeffrey Wilmore
Partner

jwilmore@keegancoppin.com
707 528-1400 x 152

To schedule a tour,
please contact:



Dave Peterson
Senior Real Estate Advisor
dpeterson@keegancoppin.com
707 528-1400 x 110

Keegan & Coppin Company, Inc.

1355 North Dutton Avenue
Santa Rosa, CA 95401

(707) 528-1400 fax (707) 528-1419

www.keegancoppin.com

ONCOR INTERNATIONAL

OFFICES IN 220 CITIES: UNITED STATES, CANADA, DENMARK, FRANCE, GERMANY, INDIA, AUSTRIA, RUSSIA, CHINA, AUSTRALIA, UNITED KINGDOM, THE NETHERLANDS, MEXICO, JAPAN, ITALY, SPAIN, SWITZERLAND, CZECH REPUBLIC, BELGIUM, POLAND, NORWAY, UKRAINE, SWEDEN, FINLAND, HUNGARY, BRAZIL, CHILE, ARGENTINA, IRELAND

The above information, while not guaranteed, has been secured from sources we believe to be reliable. Submitted subject to error, change or withdrawal. An interested party should verify the status of the property and the information herein.