



KEEGAN & COPPIN COMPANY, INC.

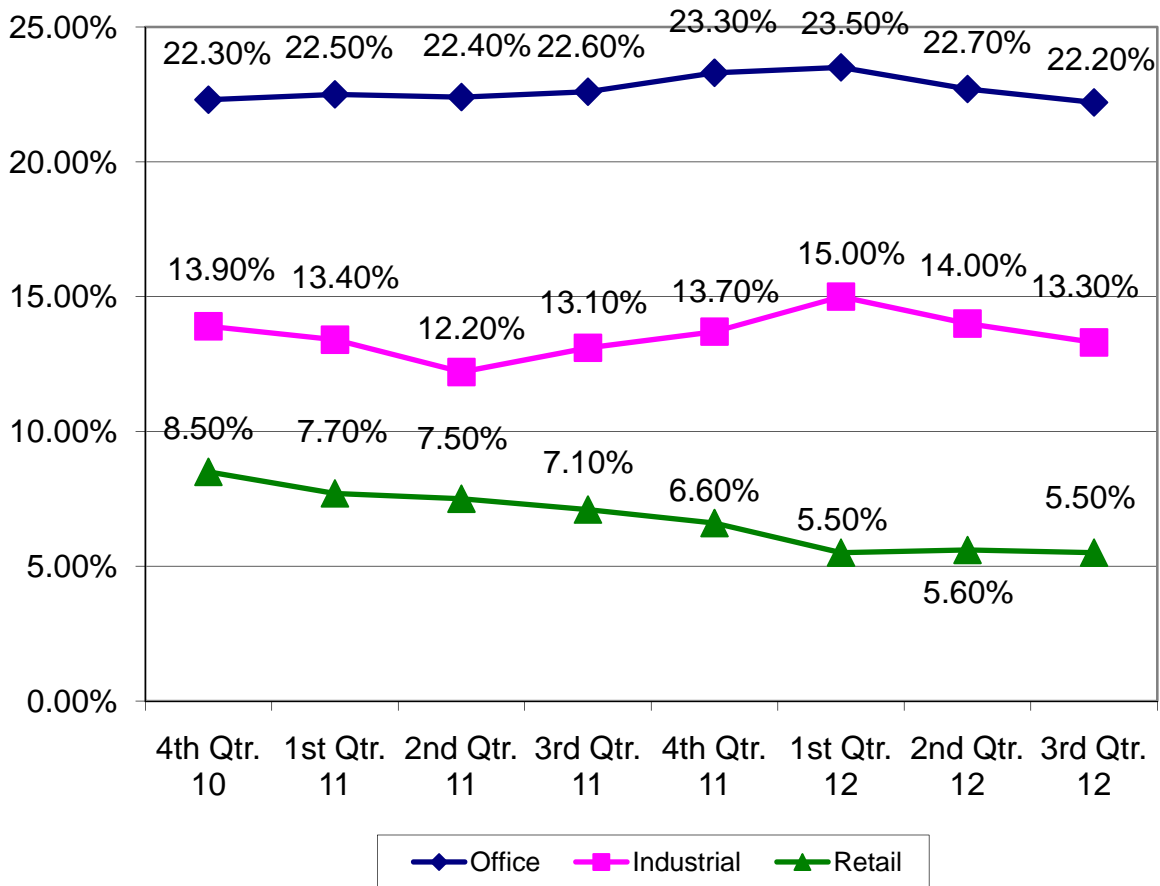
ONCOR INTERNATIONAL

EIGHT-QUARTER VACANCY CHART

Office, Industrial, Retail

Sonoma County

(4th Quarter 2010 to 3rd Quarter 2012)



Information provided by Keegan & Coppin-ONCOR International

ONCOR INTERNATIONAL